



Serving people with disabilities since 1964

What We Do

Together *Matters

SUMMARY REPORT 2021/2022



Vision

To build an inclusive community where everyone is part of it, not apart from it.

Mission

SPD is committed to working in partnership with people with disabilities to develop their potential to the fullest so they can be self-reliant and independent.

Our Purpose

Since 1964, SPD has been helping people with disabilities of all ages to integrate into mainstream society. We remain committed to enabling them to be a part of the community and not apart from it.

People We Serve

A pioneer in serving persons with physical disabilities, today our services cater to children and youth with developmental needs requiring early intervention and education support, adults with varying congenital or acquired disabilities seeking employment and independence, and the elderly who aim to be self-reliant through rehabilitation and day care.

President's Message



FY2021/2022 was another challenging year as the world continued to reel from the impact of the COVID-19 pandemic. In times like this, the power of collective strength was all the more important as we joined hands to help persons with disabilities weather the storm.

We are thus very heartened by the solidarity shown by our staff, supporters, caregivers and partners in coming together to serve over 10,500 persons with disabilities in the year. Their immense support enabled us to deliver quality and timely services to persons with disabilities and their families, while enhancing our programmes and services to cater to the varying needs of our clients.

Programme Highlights

On the early intervention front, we piloted the Little Seeds programme at SPD@Jurong so that caregivers could learn strategies to support their children with developmental needs awaiting enrolment in the EIPIC programme. Much effort was also put into building capability among pre-school educators and caregivers through training courses and workshops to enable them to support children with disabilities better.

We resumed the DAC Without Walls programme in January 2022 after it went on a hiatus due to the COVID-19 situation. Piloted from late 2019,

we hope to see more people with moderate disabilities enhance in their physical health, independence and social relationships through this community-based programme.

In June 2021, our rehabilitation centre branched into brain injury rehabilitation, making us the first known community service provider in Singapore to provide rehabilitation to improve the quality of life of persons with moderate traumatic brain injury.

Together with SG Enable, Microsoft and Infocomm Media Development Authority, we developed the Digital Enablement Programme and trained 51 persons with disabilities in digital skills so that they would not be left behind in this highly digitally connected world that we live in.

We kept up our push for adoption of assistive technology (AT) with our ninth satellite AT loan library set up at the Singapore National Eye Centre. This is the first satellite AT loan library based in a healthcare institution.

Tapping on the collective strength of different social service agencies, we partnered SG Enable and two other social service agencies in developing a caregiver assessment and engagement framework for the disability sector.

Recognising the importance of self-advocacy, we appointed five individuals with disabilities and caregivers as Inclusion Champions and worked with them to advocate for the disability community.

Receiving the inaugural Enabling Mark (Gold) accreditation for two years from 27 August 2021 was certainly a great honour and we are heartened to receive this national-level accreditation from SG Enable.

Exciting times lie ahead as we gear up for the launch of a contact centre in the second quarter of FY2022/2023 which would provide employment and training for persons with

disabilities. We will share more details in due time.

What We Do Together Matters

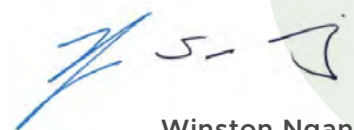
We are moved by the unwavering commitment of our longstanding partners as well as the support of our new friends who gave \$5.69 million in all to our cause. We are also blessed to have over 100 individuals and 17 corporate partners coming onboard as volunteers, contributing a total of more than 5,000 hours in service. Five corporates also supported our new groceries distribution programme where they bought groceries, then packed and delivered them to more than 100 families.

The road to inclusion has started and there is still some way to go. We are extremely fortunate to have many friends who have joined us on this journey. Without them, many of our achievements would not have been possible.

I would like to express my deepest appreciation to our partners, donors, volunteers, my colleagues on the Board, as well as the management team and staff of SPD, for believing in and staying true to our mission and for working hand-in-hand to empower persons with disabilities.

Our work in disability inclusion continues. Through it all, what we do together matters, because our unified action can rebuild lives and seed goodness in the community that would in time engender even more excellent outcomes.

Yours sincerely,



Winston Ngan
President

Highlights for the Year

We piloted the **Little Seeds programme** at **SPD@Jurong** to support caregivers whose children were waiting to be enrolled in the EIPIC.

We were accredited the **Enabling Mark (Gold)** for two years from 27 August 2021 in recognition of our inclusive employment practices.

83 students received \$237,400 in educational support from **NatSteel Holdings Pte Ltd** and the **Asia Pacific Breweries Foundation**.

An **SPD Contact Centre** is being set up under the Enabling Lives Initiative. Situated at the Enabling Village, the centre will provide employment and training for persons with disabilities and is expected to be operational by the second quarter of FY2022/2023.

Asia Pacific Breweries (APB) Foundation Scholars Winston Wong and Elliot Teng, together with former Transition to Employment client Kishon Chong, received the **Goh Chok Tong Enable Awards** in recognition of their potential and commitment in serving the community.

41 SPD staff were awarded two Star, 22 Gold and 17 Silver awards at the **Singapore Health Quality Service Awards 2022**.

Our number of pre-school partners for the **Development Support-Learning Support (DS-LS) programme** grew by 23 per cent to 326.

We launched the **Brain Injury Rehabilitation Programme (BIRP)** in June 2021, making us the first known community service provider in Singapore providing specialised rehabilitation to persons with moderate traumatic brain injury.

20,978 therapy sessions were provided at the **SPD Rehabilitation Centres** and **SPD@Toa Payoh's day care programme**, an increase of 34 per cent from last year.

We launched our ninth assistive technology satellite loan library at the **Singapore National Eye Centre**, the first that is based in a healthcare institution.

504 individuals and their families received case management support, an increase of 9 per cent from last year.

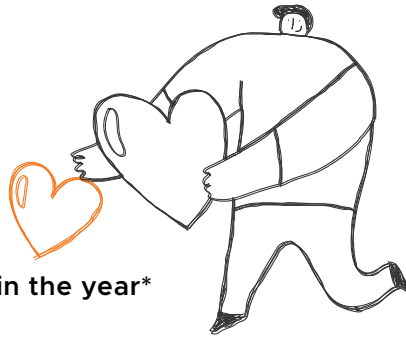
The **Generic and Technical Skills and Competencies Framework** for staff as well as a **Talent Management Framework** were developed to support capability building.



Figures at a Glance

10,572

clients supported in the year*



1,512

children and youth received early intervention and educational support



139

jobseekers with disabilities placed in open employment



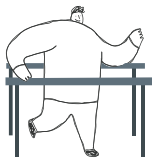
121

persons with disabilities trained for employment



6,150

individuals supported by 104 therapists in 61 rehab-based community programmes



507

individuals underwent therapy at SPD Rehabilitation Centres



214

clients served in day activity and day care programmes



262

lives enriched through assistive technology



1,456

caregivers supported



Over 15,000

individuals reached through public education efforts



108

individuals and 17 institutions donated 5,145 man hours

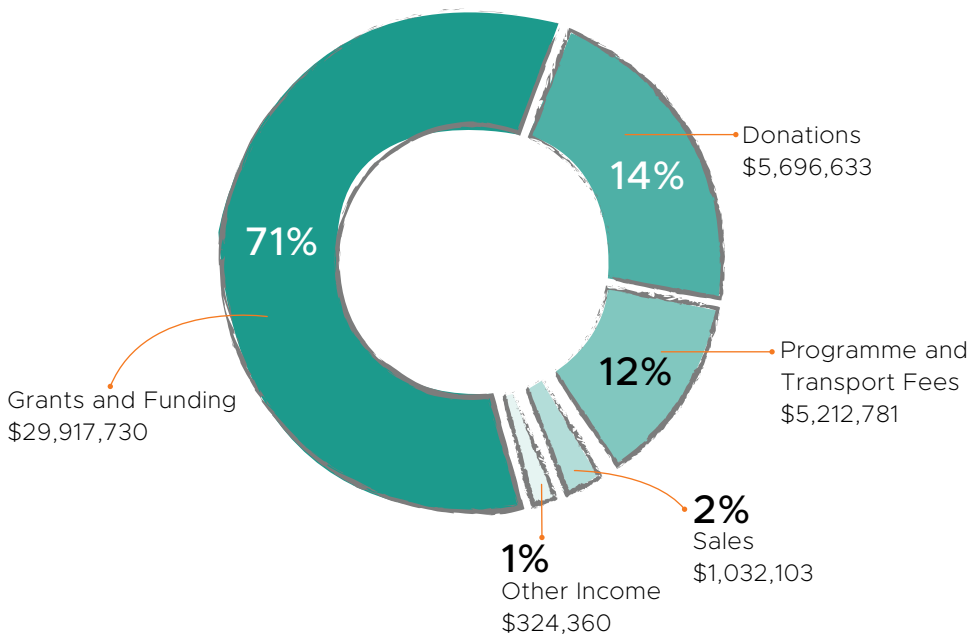
*based on service count

We sincerely thank all our donors, volunteers, supporters, friends and well-wishers who have stood by our cause and made an impact in the lives of persons with disabilities.

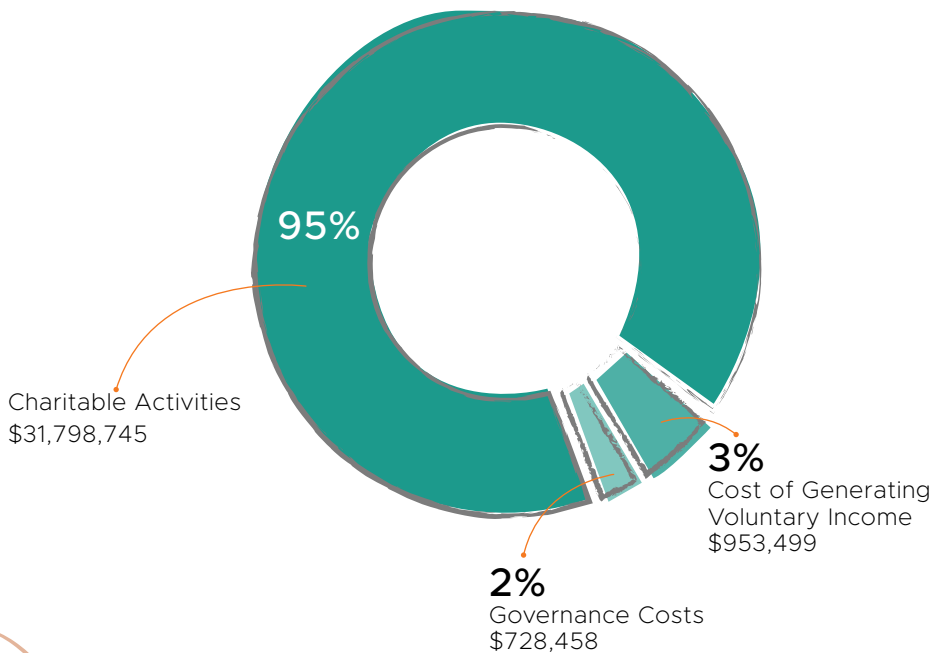
Sources of Funds and How They Were Used

In FY2021/2022, we received about \$42.2 million, mainly from Government grants and donations, which went towards programmes and services to enable more than 10,500 persons with disabilities. Our support cost was maintained at 16 per cent of the \$33 million total operating expenditure.

Sources of Funds



How Funds Were Used



Summarised Financial Statements

BALANCE SHEET (as at 31 March 2022)

	2022	2021
ASSETS		
Current Assets	69,865,302	62,181,671
Property, Plant and Equipment	1,846,281	1,385,008
Total Assets	71,711,583	63,566,679
LIABILITIES		
Current Liabilities	10,796,692	11,354,693
FUNDS		
General Fund	29,406,850	30,313,524
Designated Funds	8,094,688	8,094,688
Restricted Funds	23,413,353	13,803,774
TOTAL FUNDS AND LIABILITIES	71,711,583	63,566,679

STATEMENT OF FINANCIAL ACTIVITIES (for the year ended 31 March 2022)

	2022	2021
INCOME		
Voluntary Income	7,757,913	7,730,444
Investment Income	203,201	479,148
Income from Charitable Activities	34,101,334	31,182,783
Other Income	121,159	10,394
Total Income	42,183,607	39,402,769
EXPENDITURE		
Cost of Generating Voluntary Income	953,499	890,137
Charitable Activities	31,798,745	29,797,957
Governance Costs	728,458	686,486
Total Expenditure	33,480,702	31,374,580
NET INCOME	8,702,905	8,028,189

You Can Make a Difference



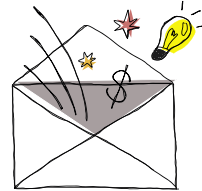
Advocate

Help raise disability awareness and integrate persons with disabilities into the community.



Fundraise

If you have an opportunity to raise funds for us, or have ideas how we can do so, please share them with us!



Donate

Every donation goes a long way towards helping people with disabilities achieve independence and self-reliance.



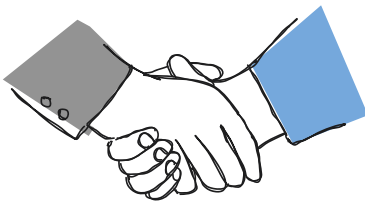
Buy Our Products

Our Sheltered Workshop offers a wide range of products and services made by a team of more than 100 persons with disabilities. Your support will translate to more training and employment opportunities for them.



Employ

Provide job opportunities to jobseekers with disabilities and enable them to be financially independent.



Volunteer

An extra pair of hands is always welcome to provide additional help to our many programmes and services.



Serving people with disabilities since 1964

Unique Entity No: S64SS0052D
(ROS Registration)

SPD's status as an Institution of a Public Character (IPC) was renewed for the period from 1 January 2022 to 31 December 2025.



Headquarters

2 Peng Nguan Street
SPD Ability Centre
Singapore 168955



/SPDsingapore



www.spd.org.sg



information@spd.org.sg



6579 0700