

ALL THINGS GOOD

SPD Annual Report
FY2018/2019



Contents

05	Our Purpose
07	President's Message
08	Highlights Of The Year
12	How Funds Were Used
13	The Year In Numbers
15	Our Work
16	A Good Start For Every Child
20	Standing On One's Own Feet
23	Stronger Than Yesterday
27	Technology For Good
29	Standing By You
33	Growing The Sector Together
35	Advocating Change
36	In Good Company
38	Our People
40	What Lies Ahead
41	Our Leadership
42	Governance
48	Thank You!
58	How You Can Help





By having the **values** of **commitment**, **integrity with compassion** and **professionalism** ingrained in our DNA, we endeavour to fulfill our **vision** of an inclusive society where everyone is a part. We are driven by our **mission** to work in partnership with people with disabilities to develop their potential to the fullest so that they can be self-reliant and independent.



Our Purpose

SPD is a local charity set up in 1964 to help people with disabilities maximise their potential and be a part of mainstream society.

We are here to help children and youths with special needs reach for the stars and be the best that they can be through early intervention and educational support.

We strive to boost the self-reliance and mobility of persons with disabilities within the community, and we do so through therapy services, assistive technology and the support and encouragement of our care team.

Our day care programmes provide respite to families, making it possible for persons with disabilities to stay with their loved ones at home for as long as possible without having to resort to institutional care.

A strong advocate for inclusive employment, we train people with disabilities and work with them to seek suitable employment opportunities so that they can be financially independent and lead a full and engaged life.

After more than 50 years, we remain focused and committed to enabling people with disabilities.





President's Message

It has been a good year! Our friends – caregivers, volunteers, donors and partners – continued to rally behind us, and we made new connections with like-minded individuals and organisations who joined us to create greater impact on the lives of persons with disabilities and their families.

We had a good start to the year. The inaugural early intervention conference which took off in April 2018 was an accomplishment we all cheered for and were particularly proud of. Seeing that the early intervention sector had not had a sector-wide platform for knowledge sharing, we mooted the idea of a conference with our sector friends and partners. The conference was a huge success, bringing over 1,000 early intervention professionals from 10 Early Intervention Programme for Infants and Children (EIPIC) service providers together for the very first time to learn, network and share best practices.

During the year, we expanded several programmes to support more persons with disabilities. We increased the clients served at our Day Activity Centre (DAC) by 40 per cent, as a higher number of clients were enrolled and the DAC also started admitting adults with autism. In addition, we broadened the intake criteria of our Transition to Employment (TTE) programme to help more people who have acquired physical disabilities. Through the TTE programme, we enabled more than 75 per cent of the clients to return to work or studies. At the same time, the Employment Support Programme also offered 15 per cent more training places to increase the employability of jobseekers with disabilities.

We worked towards increasing the accessibility of assistive technology, a powerful enabler for independent living, study, work and participation in the community. Together with the Infocomm Media Development Authority, we set up satellite loan libraries in three institutes of higher learning to offer students with disabilities greater access to assistive technology. We continued to build knowledge on assistive technology through workshops and training sessions for professionals, educators and caregivers to enable them to support persons with disabilities better.

These good works were only possible with the support of many. In this year of good, our donors contributed \$6.76 million to support our programmes. We engaged more regular volunteers – 98 individuals in all – who invested at least 16 volunteering hours each and also forged new partnerships with 38 companies which came onboard as volunteers. Collectively as a community, we provided services that supported 10,451 persons with disabilities, a 10 per cent increase from last year.

Besides serving our clients, we focused on increasing the support to caregivers in the past year. We initiated more than 60 caregiver support and training sessions to enable caregivers to share experiences with one another and be equipped with the knowledge to provide good care to their loved ones.

Our public education efforts reached close to 12,000 individuals locally, and our voice was heard by a wider audience when we were invited to present on independent living leveraging on technology and design at Singapore's side event at the United Nations' 12th Session of the Conference of States Parties to the Convention on the Rights of Persons with Disabilities. As an organisation in special consultative status with the United Nations' Economic and Social Council, we look forward to greater knowledge sharing on a wider network.

Governance is integral to the good running of every organisation and the welfare of our clients. We are delighted to receive the Charity Council's Charity Transparency Awards for the third consecutive year since 2016. We continued to invest in our staff to build professionalism and provide high quality service to our clients. We remained committed to reviewing and improving our organisational processes and procedures by seeking accreditation from the internationally recognised accreditation body, the Commission on Accreditation of Rehabilitation Facilities (CARF) International.

We are honoured to have President Halimah Yacob as our Patron and lending us her support to bring wider public attention to our cause. Most recently, she attended the SPD Charity Show 2019 in March, which raised over \$4 million from individual and corporate donors.

My heartfelt thanks to all our partners, sponsors, volunteers as well as the Board, management and staff of SPD, for their relentless pursuit of delivering all things good in the year. I look forward to our continuous collaboration towards many more good years to come.

Yours sincerely,



Chia Yong Yong, BBM, PBM
President
SPD

Highlights Of The Year

1

Working alongside the Infocomm Media Development Authority and institutes of higher learning, satellite assistive technology loan libraries were set up at Temasek Polytechnic, Singapore Polytechnic and Ngee Ann Polytechnic.

2

The sector's first Early Intervention Conference took place in April 2018 with SPD as co-organiser.

3

The Day Activity Centre was expanded to support adults with autism.

4

The Transition to Employment gym was enhanced to improve clients' experience and care support.

5

President Halimah Yacob accepted our invitation to be Patron.

6

Charity Council conferred on SPD the Charity Transparency Award in November 2018.

7

13 staff were recognised for their excellent service at the Singapore Health Quality Service Awards in January 2019.



Highlights Of The Year



Caregivers' wellness event



Recreational activities



Early Intervention Conference 2018



SPD's CSR initiative



Volunteers' networking session



Outdoor learning



Scholarship award presentation



SPD Ability Walk 2018



SPD Charity Golf 2018



SPD Flag Day 2019



SPD Charity Show 2019



Youth Development Programme



SPD Charity Dinner 2018

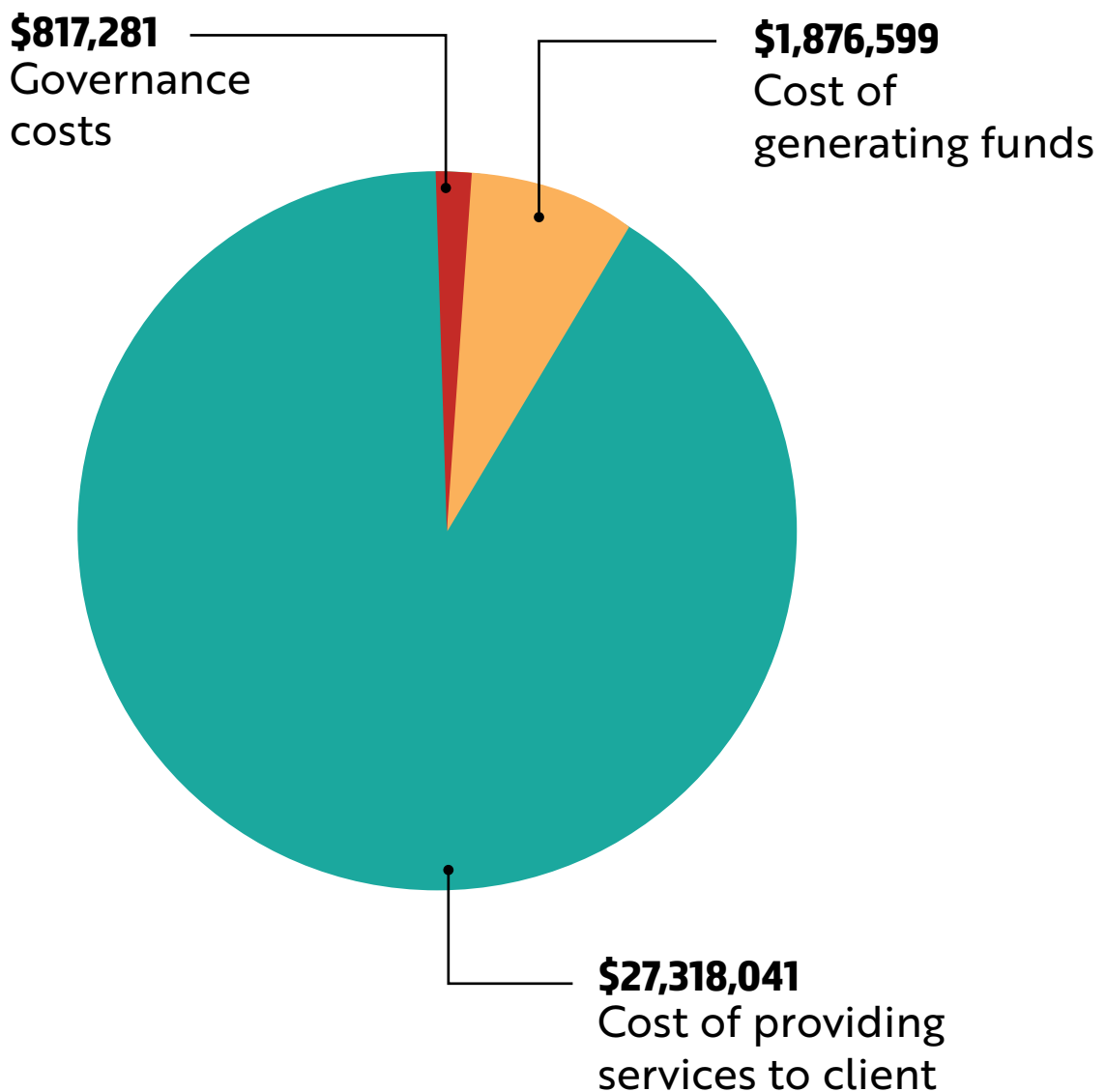


Disability awareness workshop



Chinese New Year outing

How Funds Were Used



Our support cost was **16%** of the \$30 million total operating expenses.

The Year In Numbers

10,451 LIVES TRANSFORMED



327

persons with disabilities trained for employment



1,199

children & youths supported in early intervention and education



197

jobseekers with disabilities found open employment



12,000

individuals reached through public education efforts

5,880



individuals supported by **81** therapists in **55** community-based rehabilitation programmes

200



lives enriched through AT

2,041

caregivers empowered



27,901

man hours donated by volunteers



Our Work

We have impacted persons with disabilities in the work that we do across these areas:

- 1.** Early Intervention and Educational Support
- 2.** Caregiver and Case Management Support
- 3.** Therapy and Rehabilitation
- 4.** Employment and Training
- 5.** Assistive Technology
- 6.** Sector Empowerment



A Good Start For Every Child

EARLY INTERVENTION SUPPORT

Our early intervention programmes - the **Early Intervention Programme for Infants and Children (EIPIC)**, the **Development Support and Learning Support (DS-LS)** and the **Continuing Therapy Programme (CTP)** - help children and youths below 18 years old with developmental needs reach their highest potential.

EIPIC

568

children supported, an increase of 6% from last year

91

children graduated from EIPIC

52

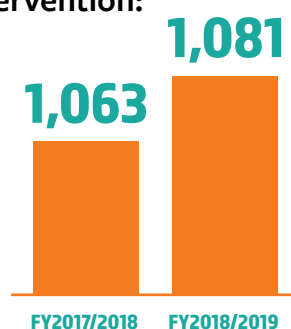
progressed to mainstream primary schools

39

progressed to special schools

GREATER IMPACT

Children and youths supported in early intervention:



Hello World!

Lincoln used to have little eye contact with others and had frequent meltdowns. His mother was also concerned about his communication and language skills, as well as his ability to control his behaviour and emotions.

After having enrolled in the Building Bridges EIPIC Centre at SPD@Bedok, Lincoln, who has Autism Spectrum Disorder (ASD), learnt to respond when he is called and is now able to maintain a conversation with his peers and adults.

He has gradually learnt to participate in class activities independently, joins in during group play and is more cheerful.

"Lincoln is able to communicate with many more words now and the meltdowns have also reduced. The most important thing is that he enjoys EIPIC very much. I am very grateful to all the teachers in SPD, you guys are amazing," said Lincoln's mother, Mdm Samantha Sng.

Zach Lincoln Lau, 5



Development Support and Learning Support (DS-LS)

359

children supported, an increase of **11%** from last year

322

therapy packages offered

37

learning support packages offered

236

partnerships with child development centres

Catching Up With His Peers

Elijah started talking only at four years old and had a vocabulary of less than 10 words. When he first attended the Building Bridges EIPIC Centre at SPD@Jurong in March 2017, his speech was unclear and he needed a lot of encouragement to speak and participate in class activities. With regular and structured intervention, Elijah progressed quickly and graduated to the DS-Plus pilot programme where he received speech and language therapy support in his pre-school.

"Elijah has shown tremendous improvement in articulation and interaction with his peers, and with it, an increase in his vocabulary. This has enabled Elijah to express himself better, which helps him in his day-to-day activities, socialising and building up his confidence," shared his mother, Mdm Pang Chong Jie.

Elijah Lim, 7



Continuing therapy programme (CTP)

154



children and youths supported, half of whom were diagnosed with ASD

More children with higher needs requiring extended support in speech and occupational therapy



DID YOU KNOW?

4,400

children were diagnosed with developmental needs in 2014 and this number has likely gone up.*

*'Increase in Number of Children Diagnosed with Developmental Issues', Enabling Masterplan 3

EDUCATIONAL SUPPORT

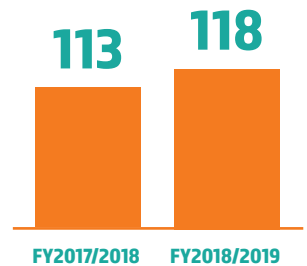
Education is an important social leveler that no child should be denied. We support students with disabilities through bursaries, scholarships and tuition grants to help them achieve their highest potential.

The **NatSteel-SPD Education Programme Bursary Award** is offered to students with disabilities from low-income families studying in mainstream schools to alleviate the financial burden of their families.

The **Asia Pacific Breweries (APB) Foundation Scholarship for Persons with Disabilities** is awarded for excellent academic results to those studying at recognised local universities.

GREATER IMPACT

Children and youths supported in mainstream schools:



\$268,900

in bursaries and scholarships awarded



89



students received bursaries

20

tertiary students received scholarship

6

students from low-income households received tuition grants

3

youths received SPD Youth Aspiration Award

Never Give Up On The Opportunity To Learn

White cane user, Bo Sheng, who has had farsightedness from an early age, is a recipient of the NatSteel-SPD Education Programme Bursary Award. His elder brother, who has the same condition, also benefited from the bursary award. Supporting two children with visual impairment adds financial strain to the family. The bursary has helped with Bo Sheng's and his brother's educational expenses and offers his family some financial reprieve.

The Secondary 2 student enjoys learning despite having to put more time and effort into his studies than others. The unwavering support of his teachers and tutors has instilled in Bo Sheng the desire to mentor the next generation of students with disabilities in future.

Toh Bo Sheng, 15



LEARNING OPPORTUNITIES

Youth Development Programme

17 youths with and without disabilities came together to develop projects to promote greater social inclusion in the second series of the Youth Development Programme (YDP) from September 2018 to March 2019.

Their hard work culminated in four projects:

Prototype of a card game targeted at primary school students to increase understanding and awareness of disability issues and encourage support for people with disabilities



Designed a disability workshop for potential employers hiring persons with disabilities



Designed psycho-social workshop for students with Autism Spectrum Disorder (ASD) studying in a local polytechnic



Collaborated with National Library Board (NLB) on prototyping an inclusive library for children with ASD



Coding Quest Camps

54 adults and youths with disabilities attended two coding quest camps co-organised by SPD and Microsoft to enhance their digital literacy.



Standing On One's Own Feet

EMPLOYMENT SUPPORT SERVICES

Our **Employment Support Programme (ESP)** helps persons with physical, hearing and visual disabilities secure open employment. Job support of at least six months is offered to ensure that the new hires are able to adapt and cope with the new job and working environment.

We also offer training courses, such as computer skills with WSQ certification, general administrative skills and telephone skills, to improve the employability of persons with disabilities.

498

jobseekers
with
disabilities
supported

197

placed
in open
employment
at **146**
organisations

50

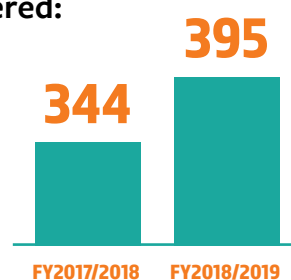
vocational
training classes
conducted

395

training places
provided to
increase
employability of
163 trainees

GREATER IMPACT

Employment training
places offered:



Never Losing Sight Of His Dreams

Azhari uses a white cane and tries to get back home by 7pm because of poor vision at night due to a rare genetic disorder of the eye. Although he did not complete his GCE 'O' levels, he obtained a certificate in Workplace Literacy and Numeracy (WPLN) Assessment.

With the support of the ESP, Azhari is now working in Watsons, a health and beauty retailer. He believes that having a disability does not mean inability, and with a little extra help, people with disabilities can also achieve what they want.

"Learning new things, the sense of satisfaction when customers are happy and achieving sales targets are what I like most about my job," said Azhari.

Azhari Bin Adam, 35



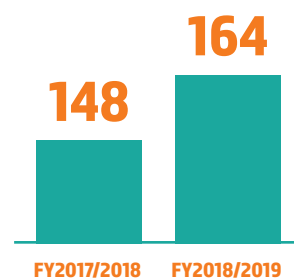
VOCATIONAL TRAINING AND SHELTERED EMPLOYMENT

The **SPD Sheltered Workshop** provides sheltered employment as well as vocational and community living skills training to persons with disabilities through projects and contract works, carried out in a workplace environment to improve their employability in the open employment market.

The workshop launched a new enclave worksite at VITAL in January 2019 that provides job openings in document digitisation for **36** persons with disabilities.

GREATER IMPACT

Persons with disabilities in sheltered employment:



Capacity of Sheltered Workshop ramped up from **80% to 100%**



10 trainees graduated to open employment



30 trainees placed in actual workplace with job support through enclave projects

\$395,178

in income generated through the workshop



Making Friends And Finding Independence

Before joining the Sheltered Workshop in 2014, Foo Mun had been staying at home for over 10 years.

Initially, Foo Mun, who has hearing loss and intellectual disability, kept to himself and did not interact much with his co-workers and supervisors. Spending time at the Sheltered Workshop has improved his interpersonal and social skills. Now, he proactively seeks clarification when he is unsure of the tasks, joins his co-trainees during breaks and communicates with staff and volunteers through gestures. Foo Mun also commutes by bus from his home to SPD after undergoing training by our occupational therapist last year.

His caregiver, Ms Karen Tham, is happy that Foo Mun is taking the initiative to help out at home now. He has also started keeping track of work days, a marked improvement from the past when he stayed home, oblivious of the passing of days.

Tham Foo Mun, 56



TRANSITION TO EMPLOYMENT

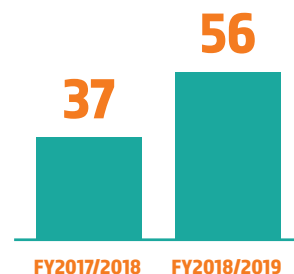
Transition to Employment (TTE) is a community-based programme that adopts a trans-disciplinary and client-centred approach to help individuals with acquired physical disabilities return to work or school.

The TTE gym underwent renovation at the end of 2018 to improve client experience and for better utilisation of space.

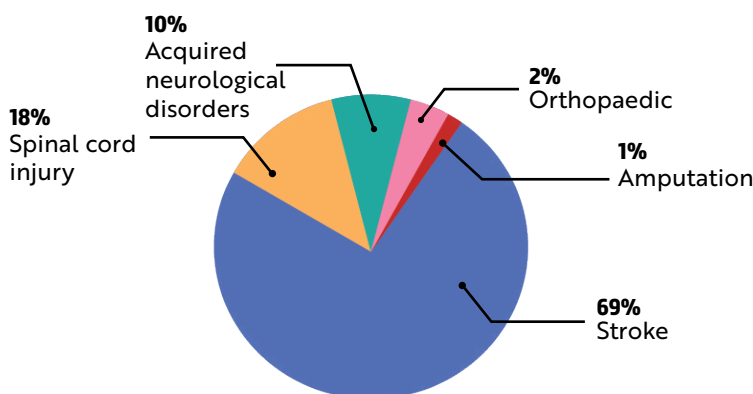


GREATER IMPACT

Persons with disabilities who returned to work or school:



Breakdown of clients' diagnosis



When Resilience And Courage Wins The Day

Zohra became a quadriplegic after a traumatic traffic accident in 2017. When she became too weak to breathe, the doctors had to puncture a hole in her windpipe to keep her alive. Zohra's determination to live eventually saw her getting up from the hospital bed and fighting to get better.

At SPD, Zohra underwent therapy to improve her strength, endurance and fine motor skills. She also built friendships with other clients at the centre, providing one another with peer support.

From many nights crying in bed initially, Zohra began to have a new purpose. A social media influencer, Zohra has been posting videos to create awareness of persons with disabilities and speaking up for a more inclusive society. She courageously shares her story, her experience in managing stress and expectations, and the importance of self-care, and motivates others with disabilities to never give up.

Zohra believes that when persons with disabilities speak up collectively with one voice, society can become more inclusive. Zohra is currently pursuing her diploma in digital marketing.

Fathima Zohra, 21



Stronger Than Yesterday

RESPITE CARE SERVICES

Through a balanced and structured programme, the **Day Activity Centre (DAC)** and the **day care programme** at SPD@ToaPayoh provide meaningful engagement for adults with disabilities and build their skills in self-help, community living and social interaction. Caregivers and family members also get the respite they need.

In June 2018, the DAC expanded to support adults with Austim Spectrum Disorder (ASD).

85

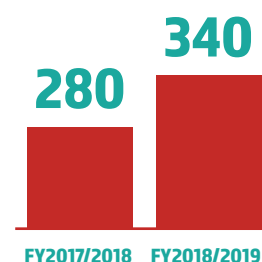
supported
at DAC

255

attended day care
at SPD@Toa Payoh

GREATER IMPACT

Persons with disabilities in
respite care services:



A Place For Davis

Davis is one of the first few clients with ASD who enrolled in the expanded DAC. He initially attended school in Australia. When the family moved back to Singapore in 2015, Davis underwent a period of emotional stress and had difficulties adjusting to a new school in Singapore. In the end, he could not continue there and Davis' mother had to stop work to take care of him at home.

Things took a turn for the better in September 2018 when Davis enrolled in the DAC. The structured and consistent routine at the DAC helps Davis to follow instructions, focus on his tasks and learn calming techniques. At the DAC, Davis engages in table-top activities, such as arts and crafts, packing and sorting tasks, as well as outdoor activities including basketball and swimming sessions, which he enjoys.

Davis is now able to focus and complete his work tasks. He is also rostered to help collect lunch and helps clear the tables at times. Though these may not seem significant, they are small steps of independence to be celebrated.

Davis' attendance at the DAC has given his mother the respite she needs. "In the past months, I can feel that Davis likes the place. The staff are very professional and kind to him. They respect the clients and make friends with them. I am happy to see my son a happy boy at the centre and at home," said Mdm Maggie Zhu.

Davis Pan, 20



REHABILITATION CENTRES

The **SPD Rehabilitation Centres** (RCs) at the SPD Ability Centre and SPD@Toa Payoh offer physiotherapy and occupational therapy to adults and the elderly with acquired or congenital disabilities, to enable them to work and live independently within the community.

A group maintenance programme was introduced at the SPD Ability Centre to encourage interaction between RC clients and to provide peer support to those with similar conditions.

36

home therapy sessions offered to 7 clients who were unable to travel for therapy at the RCs



21

virtual rehab sessions conducted for 4 persons with disabilities at home under the Tele-Rehab pilot

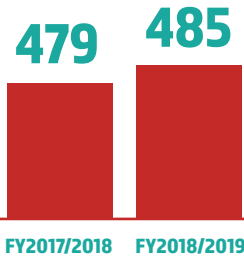


10,972

therapy sessions provided at RCs

GREATER IMPACT

Persons with disabilities served at the RCs:



Regaining Independence

Mr Li Wen Qing had a stroke in June 2018 and subsequently underwent a cranioplasty, a surgical repair to his skull, in November 2018. Mr Li, who used to work as a general manager in a shipping company, had to stop working after the stroke.

One step at a time, Mr Li needs to re-learn many daily tasks, such as dressing and tooth brushing, towards regaining independence.

After undergoing rehabilitation at SPD, Mr Li is now able to dress himself with minimal assistance from his helper. With his sights set on walking again, Mr Li also adheres to a stringent strengthening exercise regime at home prescribed by his SPD therapist.

Li Wen Qing, 53



SPD THERAPY HUB

The **Therapy Hub** model was pioneered in 2005 to centrally recruit and manage a pool of therapists to meet the needs of the sector and to provide greater career development options.

With co-funding from the Ministry of Health (MOH) and the Ministry of Social and Family Development (MSF), the SPD Therapy Hub could better support services and clients in the community.

81

physiotherapists, occupational and speech therapists supported children, adults and the elderly in the year

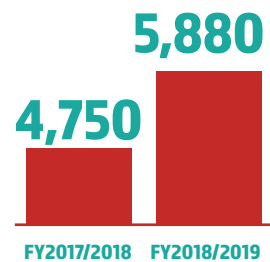


55

programmes serving persons with disabilities within SPD and in the community, such as in nursing homes, day activity centres, community hospitals, rehabilitation centres and schools, supported by our therapists

GREATER IMPACT

Persons with disabilities who received therapy support:



DID YOU KNOW?

11,000

elderly are staying in nursing homes and other live-in institutions*

Singaporeans are living longer but will spend

3 to 8

years later in life with some form of disabilities#



* 'Residents in Old Folks' Home by Type of Organisation and Sex', Department of Statistics, Yearbook of Statistics 2017.
'Programmes that help with seniors' needs', The Straits Times, 20 February 2018.



Technology For Good

ASSISTIVE TECHNOLOGY

The **Specialised Assistive Technology Centre (Specialised ATC)** promotes the use of assistive technology (AT) to help persons with disabilities overcome their day-to-day challenges and become fully-integrated into all aspects of community living.

The team operates from **Tech Able**, which is jointly managed by SPD and SG Enable, at the Enabling Village.

200

lives enriched through
AT prescriptions

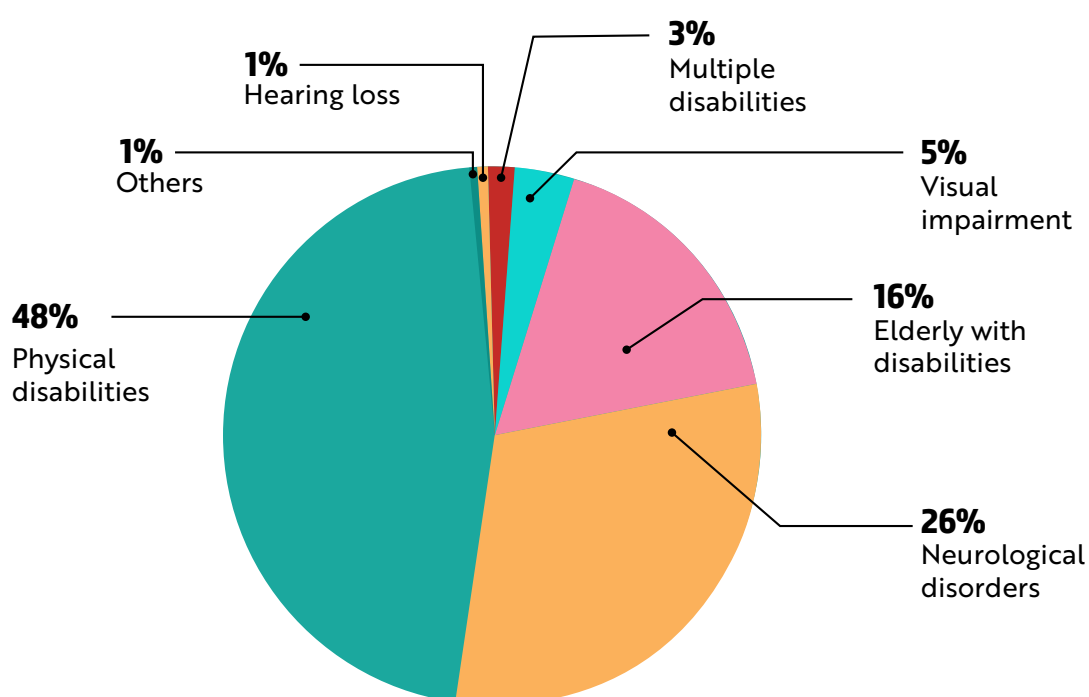
699

intervention/training
sessions conducted

321

AT devices loaned out

Breakdown of clients' diagnosis



Satellite AT Loan Libraries

We partnered Temasek Polytechnic, Singapore Polytechnic and Ngee Ann Polytechnic in setting up satellite assistive technology (AT) loan libraries in the campuses to provide their students with different learning needs greater access to AT.

Finding His Voice

Zhe Kai has an intellectual disability and his speech was often unclear and limited to a few words and short phrases. The Specialised ATC explored the use of Augmentative and Alternative Communication (AAC) devices with Zhe Kai and prescribed him with a speech generating application on his mobile tablet.

Zhe Kai uses the symbols and text in the application to form phrases and sentences and the device would then 'speak' for him. This complements his verbal speech, enabling him to express his thoughts, feelings and aspirations in greater detail. With his improved communication, the team is working with him to try out suitable applications to enhance his literacy.

To help Zhe Kai use the AAC more effectively at home and in the community, his mother attended our AAC for Caregivers Training Programme. During the training sessions, Zhe Kai's mother learnt and gained confidence in using skills and strategies that would enable her to effectively facilitate her son's communication. Seeing positive impact of AAC on her son's life, Zhe Kai's mother has been advocating and sharing her experience with other caregivers.

Tan Zhe Kai, 16



DID YOU KNOW?

18,000

students with special needs are attending mainstream in schools but teaching material and assessments are still not fully accessible.*

Standing By You

CASE MANAGEMENT

Under the **Specialised Case Management Programme (SCMP)**, our social workers and case management officers reach out to persons with disabilities and their families for their multiple needs. Their assistance include financial assistance, supportive counselling, connecting them to relevant resources and social service agencies, organising support groups and caregivers wellness programmes, and providing consultancy on disability issues.

542

individuals and their families received case management support



512

home visits conducted



Staying Happy And Active

Mr Lee stays alone and had fallen several times because of his weak legs. He had to rely on his neighbours for his basic needs like buying grocery and was at risk of isolation.

Our SCMP team helped Mr Lee with the purchase of a motorised scooter and worked with various community partners to reconnect him with the community. Mr Lee is now able to carry out tasks on his own, participates in outings and attends a senior day activity centre for therapy and social interaction. With SPD's support, Mr Lee is leading a happier and more active life.

Lee Kim Swei, 69



CLIENT SUPPORT

Support Groups

2 support groups started for stroke and spinal cord injury clients

7 sessions on personal hygiene and **1** on safety precautions when using powered mobility devices were conducted for Sheltered Workshop trainees

2 employment support workgroups were initiated for clients seeking employment to boost their confidence and resilience

Return-to-work support group set up for Transition to Employment (TTE) clients

Former TTE clients provided peer support for current clients



CAREGIVER SUPPORT

Training and Empowerment



12

caregiver training sessions on Augmentative and Alternative Communication (AAC) conducted for

124

caregivers



294

caregivers empowered by Specialised Case Management Programme (SCMP)



Caregiver Champion programme initiated at SPD@Bedok and **#MakanBonding** activities started at SPD@Tampines to encourage greater caregiver involvement and sharing



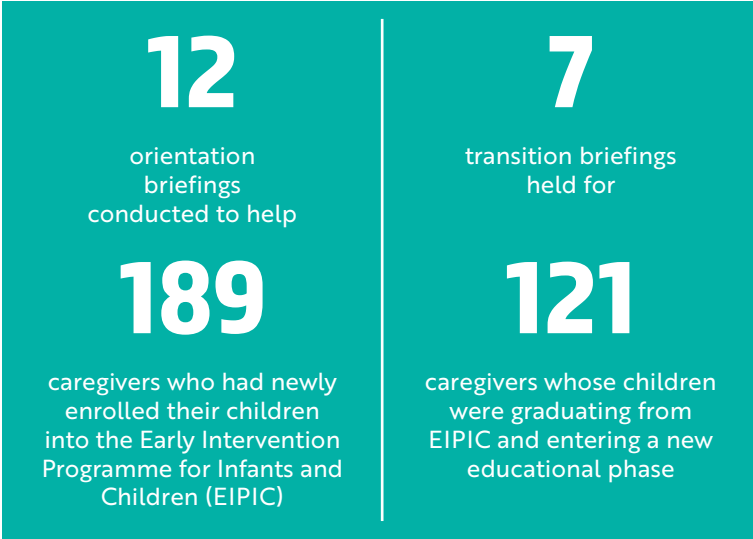
30

sessions of educational talks, workshops on self-care and parent/peer support held and attended by



353

caregivers and parents

Orientation and Transition Briefings



Resources

<div>Loan Library System piloted at SPD Ability Centre to provide parents with resources they could use at home</div> <div></div>	<div>Articles on caregiving strategies shared with parents monthly</div> <div></div>
<div>Phase 2 of the Pre-School Management System launched to improve communication between EIPIC teachers and caregivers</div>	<div>Assistive technology (AT) devices loaned to students with disabilities and education faculties from the satellite AT loan libraries at institutes of higher learning</div>



SUBSIDIES & FINANCIAL ASSISTANCE

56%

Rehabilitation Centre clients in SPD Ability Centre and

68%

SPD@Toa Payoh clients received at least **75%** in Government subsidies for their fees



14%



early intervention clients enjoyed the highest subsidy tier

\$18,057

in financial assistance offered to **22** clients through the **SPD Care Fund**

\$101,500

in grocery vouchers extended to **322** clients from low-income households under NTUC Fairprice Foundation's **Daily Needs Programme**

\$2,050

in transport vouchers from SMRT's **Gift of Mobility** helped **12** clients commute to school, work and medical appointments

49

clients empowered with computer access by the Infocomm Media Development Authority's **NEU PC Plus Programme**



SPECIALISED TRANSPORTATION

We provided heavily subsidised two-way dedicated transport to clients who were unable to take public transport to our centres due to their disabilities or route inaccessibility. Clients who required this service had decreased in the year as some clients successfully began independently travelling to SPD.



495

clients benefitted from specialised transport service



More than

400

daily trips made

**\$1.46
MILLION**

in transportation costs incurred

Growing The Sector Together

ASSISTIVE TECHNOLOGY EXPERTISE

32

assistive technology (AT) workshops and training sessions conducted

588

professionals working with those with disabilities trained

TRAINING FOR PRE-SCHOOL AND ALLIED EDUCATORS

138

pre-school and allied educators trained by our early intervention professionals to boost their competency in supporting children with special needs in mainstream schools



CONFERENCES & PRESENTATIONS

Supported IMDA's biennial E² Connect Forum 2018 to promote assistive technology (AT) use among persons with disabilities at home, at work and on the move



Presentation on integration of patient care, and work readiness and employment of persons with disabilities by SPD occupational therapists at the National Occupational Therapy Conference



Presentation on eye communication using mainstream technology by SPD speech therapist at the International Society for Augmentative and Alternative Communication Conference



Presentation on efficacy of music in improving language in children with special needs by SPD speech therapist at the American Speech-Language-Hearing Association Conference



PROFESSIONAL DEVELOPMENT

4

AT specialists received/undergoing certification in AT

8

allied health students from the National University of Singapore and Singapore Institute of Technology clinically placed at various programmes in SPD

Clarity on the role of social worker in the disability sector provided through participation in TWG, The Wakened Giants, a network consisting of senior social work leaders in the sector

15

physiotherapists, occupational therapists and speech therapists attained full registration status



Advocating Change

Through talks, events as well as training and workshops, we reached out to nearly **12,000** individuals with the aim of inculcating an inclusive mindset among Singaporeans.

The public education team and SPD President, Ms Chia Yong Yong, conducted **32** talks and workshops for companies, schools and institutes of higher learning.

Ms Chia spoke at various national, regional and international platforms, including the Singapore's side event at the United Nations' 12th Session of the Conference of States Parties to

the Convention on the Rights of Persons with Disabilities, the Pyeongchang International Human Rights Forum for Persons with Disabilities and the Korean Paralympic Committee Forum.

To commemorate International Day of Persons with Disabilities (IDPD) on 3 December, we launched an integrated campaign to help members of the public to be more confident and comfortable when interacting with persons with disabilities:

Installed IDPD campaign posters at **21** MRT Stations from 22 November to 19 December, media space courtesy of SMRT

Launched a microsite with disability-related information in celebration of the IDPD campaign

Jointly produced a disability sensitivity video with a group of students from Nanyang Polytechnic

SPD@Jurong raised awareness about early intervention and SPD's services at a health screening event organised by the National University Hospital for low-income families

We leveraged the media including social media to advocate change:

272 media mentions

7,473 social media followers

6 letters published in The Straits Times Forum page and TODAY Voices



1,381 new followers on social media

754 social media postings



In Good Company

Good people bring out the good in other people. We thank all our partners and many supporters who gave their time, money and a ready smile or encouraging words so that people with disabilities are not left behind.

COMMUNITY PARTNERS

Educational Institutions

- Community mobility exploration programme conducted with Nanyang Polytechnic for 12 Sheltered Workshop trainees.
- Drama workshops for parents and caregivers run in partnership with Singapore Polytechnic's Applied Drama & Psychology students.
- Partnered Hong Kah Secondary School, Ngee Ann Polytechnic and social enterprise Engineering Good to develop learning materials and mobility devices for children.

Government Agencies and Corporates

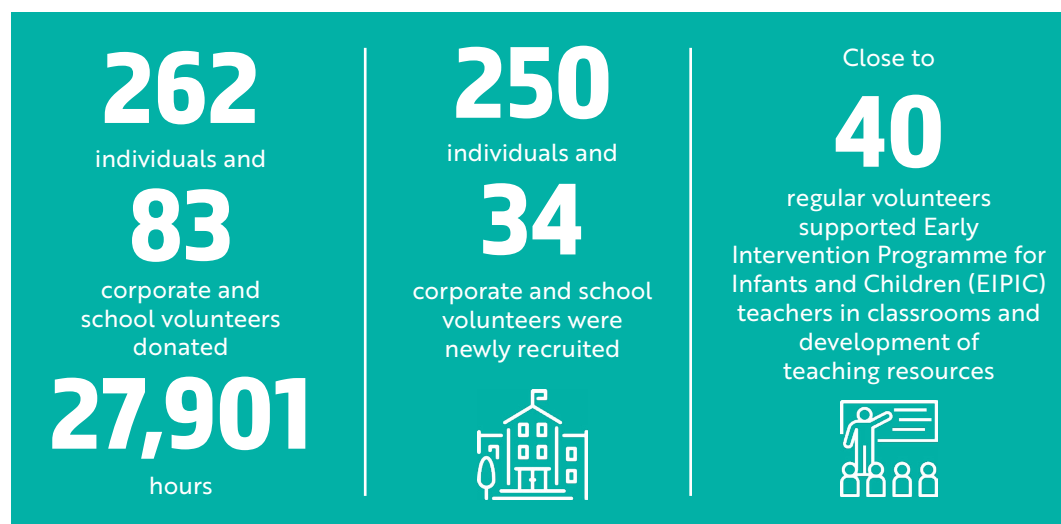
- Collaborated with Bukit Batok Civil Service Club, DHL, Equal Ark, Happy Fish Swim School, L'Oréal, Methodist Girls' School, Ministry of Manpower, Spectra Secondary School, Tsao Foundation, Jurong Central Zone D Residents' Committee and The Good Life, to increase outdoor learning opportunities for our children.
- Enlivened the children's learning within the classrooms through partnership with People's Association, Kok Fah Technology Farm and National Library Board (NLB).

Healthcare Institutions

- Collaborated with Ng Teng Fong General Hospital to fast track patients' enrollment into the Transition to Employment programme.



VOLUNTEERS



DONORS AND SPONSORS

- **\$6.76** million raised through corporate and individual giving.

OTHER VWOS

- Co-organised the inaugural Early Intervention Conference with nine other EIPIC agencies for over **1,000** professionals working with children with special needs.



Our People

We carry out our mission with people, who work alongside our clients and behind the scenes, to deliver the best care, ensure that our processes are robust and resources are utilised in the most efficient manner. They are our staff, one of our most valuable assets.

PEOPLE DEVELOPMENT

348

Staff strength

57

training hours
clocked by each
staff on average

39

staff on sponsored
professional courses
and conferences

Areas of succession
planning, leadership
and management
development
addressed at the
National Council of
Social Service (NCSS)
People Practice
Consultancy

12

teachers supported in
their Advanced Diploma
in Early Childhood
Intervention
(Special Needs)

33

teachers and allied
healthcare professionals
in Key Worker Model
Training

23

early intervention
professionals and
senior teachers attained
Certificate of Autism and
Higher Certificate of
Autism

Day Activity Centre (DAC)
staff underwent training
to be further equipped
to handle clients with
Autism Spectrum
Disorder (ASD)

SERVICE QUALITY COMMITMENT

- **13** staff presented with the SingHealth Quality Service Awards.
- **7** staff recognised in the SPD Service Excellence Awards.

PROCESS IMPROVEMENTS

- Bright Ideas staff suggestion scheme and the continuous improvement initiative launched.
- Data protection policies and practices strengthened.

GIVING BACK

- **4 hours** donated by each staff to other non-profit organisations.





What Lies Ahead

ACCREDITATION

- CARF re-accreditation for SPD Rehabilitation Centres and Continuing Therapy Programme at SPD Ability Centre and SPD@Tampines.
- CARF accreditation for Transition to Employment (TTE) programme.

ENHANCE QUALITY OF LIFE AND CARE FOR CLIENTS

- Discussions with hospitals for quicker admission to TTE.
- Implement Early Intervention (EI) Continuum at all four Building Bridges EIPIC Centres.
- Incorporate community-based learning at the Building Bridges EIPIC Centres.
- Launch Specialised Community Management Programme's (SCMP)'s Transition Care Project to provide support to clients and their caregivers to better prepare them when they transit from the healthcare setting to the community.
- Greater assistive technology adoption for clients at the Day Activity Centre (DAC) and Building Bridges EIPIC Centres.

PROMOTE GREATER INTEGRATION

- Develop DAC Without Walls to boost clients' participation in the community.
- Increase job trial opportunities for TTE clients.
- Pilot simulated classroom to help graduating EIPIC children transit into the primary school setting.
- New enclave projects and the supported employment framework project with VITAL to increase work exposure for Sheltered Workshop trainees.

CAREGIVER EMPOWERMENT

- Introduce new training areas for parents and caregivers to boost their caregiving capability.
- Set up Resource Library for EIPIC caregivers.
- Mobilise caregiver champions to lead mentorship programme.

CAPABILITY BOOST

- Integrate human resource's IT system to streamline and automate its key functions for greater efficiency.
- Encourage staff to initiate continuous improvement projects.
- Build long-term organisational capabilities.

SERVICES BEYOND BOUNDARIES

- Planning for services beyond our centre, for e.g., DAC Without Walls and work enclaves.



Our Leadership

Board of Management

Ms Chia Yong Yong, BBM, PBM

President (23 August 2008–current)
Vice-President (29 July 2006–23 August 2008)
Managing Director, Chia Yong Yong Law Corporation

Mr Ngan Wan Sing, Winston

Vice-President (25 August 2012–current)
Honorary Assistant Treasurer
(21 August 2010–25 August 2012)
Partner, Ernst & Young LLP

Ms Chow Siew Ying

Honorary Treasurer (27 August 2016–current)
Chief Financial Officer, National University Health
Services Group Pte Ltd, Ng Teng Fong General Hospital,
Jurong Community Hospital

Mr Tang Liheng

Honorary Assistant Treasurer (25 August 2018–current)
Director (Public Sector Transformation Engagement),
Public Service Division

Prof Ho Lai Yun, BBM, PBS, PBM, JP

Member

Mr Lim Hua Beng

Member

Dr Ng Yee Sien

Member

Ms Ong Toon Hui

Member

Mr Tan Soo Nan

Member

Mr Yeo Teck Guan

Member

Mr Zhang Weijie

Member

Mr Abhimanyau Pal

Ex-Officio Secretary /
Chief Executive Officer
(from 1 December 2010)

Audit Committee

Chairperson

Mr Ngan Wan Sing, Winston

Members

Ms Suman Kishinchand Balani
Mr Kamalarajan M Chettiar
Mr Kelvin Ling Ang Kerng
Mr Yeo Jeu Nam

Fundraising Committee

Chairperson

Mr Tan Soo Nan

Members

Mrs Diana Ee-Tan
Mrs Yeo Su Chen
Mr Yeo Teck Guan

Human Resource & Remuneration Committee

Chairperson

Ms Ong Toon Hui

Members

Ms Chia Yong Yong, BBM, PBM
Mr Low Wong Fook
Ms Poh Hwee Hian

Services Committee

Chairperson

Prof Ho Lai Yun, BBM, PBS, PBM, JP

Members

Mr Lim Hua Beng
Dr Lim Sok Mui, May
Dr Ng Yee Sien
Ms Susan Niam
Mr Tang Liheng
Dr Wong Meng Ee
Mr Zhang Weijie

Senior Management

Abhimanyau Pal, Chief Executive Officer

Becky Hoo, Director, Children Services

Mitchell Leow, Director, Community Partnerships

Quek Hong Choon, Director, Organisational Development

Tay Soong Kiang, Director, Corporate Services

Joyce Wong, Director, Resource & Impact

Teo Pek Wan, Acting Director, Adult & Elderly Services

Katherine Sng, Deputy Director, Community Partnerships

Governance

IMPROVING TRANSPARENCY AND ACCOUNTABILITY

SPD serves to promote the interest, welfare and advancement of people with disabilities so as to develop their potential to the fullest. In the year, the Board of Management reviewed policies aimed at reducing inefficiencies and maximising resources, which also led to greater independence and community integration of our clients. A taskforce appointed by the Board in the preceding financial year also concluded its findings on SPD's technology services in the year which assisted in giving the Board clarity in setting strategic directions for the organisation. In human capital management, the Board reviewed human resource policies and processes and endorsed IT acquisitions to stretch employee benefits, improve efficiency and retain talent.

SPD's Constitution was amended with the approval of the Commissioner of Charities and Registrar of Societies on 1 January 2019. The changes are to structure Board renewal and facilitate governance administration in view of a growing SPD whilst reserving control to the Board.

Term limits apply to Board members and the Board plans for renewal and succession. Ms Chia Yong Yong is the only Board member who continues to serve beyond 10 consecutive years as SPD benefits from her unique experience and leadership which includes her participation and contribution at the sector, community and national levels. SPD's Constitution, bye-laws and Board policy governs and guides the selection, recruitment, election, appointment and induction of new Board members. In the year, long serving Board members Mr Low Wong Fook, Ms Poh Hwee Hian and Ms Suman K Balani retired. At the same time, we welcomed Mr Lim Hua Beng, Mr Tang Liheng and Mr Yeo Teck Guan to the Board and are pleased to have Mr Kelvin Ling Ang Kerng and Mrs Diana Ee-Tan join our Board Committees.

Both new and continuing Board and Board Committee members accessed different platforms to improve skills and acquire knowledge in the discharge of their stewardship roles. Members also took on engagements that serve the sector and community at large. The Board undertakes self-evaluation at strategic points during its term using various means and platforms.

Our Board of Management is made up of volunteers who serve without remuneration for two years upon election or co-option to the Board. The current Board continued to lead the organisation in the third year of its strategic plan cycle.

The Board has appointed the Services Committee, Fundraising Committee, Human Resource & Remuneration Committee, and Audit Committee to support its work. There are Terms of Reference set by the Board and these Terms are reviewed from time to time to maintain relevancy and good governance.

Prior to its amendment in January 2019, the Constitution stipulated Board meetings be held at least once every two months. In the year, the Board had six Board meetings, apart from non-mandatory special meetings, Board retreats and workplan meetings.

BOARD OF MANAGEMENT ATTENDANCE AT BOARD MEETINGS

Board Member	Designation for Term 2018-2020	Attendance in FY2018/2019
Ms Chia Yong Yong, BBM, PBM	President	6 out of 6
Mr Ngan Wan Sing, Winston	Vice President	6 out of 6
Ms Chow Siew Ying	Honorary Treasurer	3 out of 6
Mr Tang Liheng	Honorary Assistant Treasurer	3 out of 3
Professor Ho Lai Yun, BBM, PBS, PBM, JP	Member	5 out of 6*
Mr Lim Hua Beng	Member	1 out of 3
Dr Ng Yee Sien	Member	3 out of 6
Ms Ong Toon Hui	Member	6 out of 6
Mr Tan Soo Nan	Member	4 out of 6
Mr Yeo Teck Guan	Member	3 out of 3
Mr Zhang Weijie	Member	4 out of 6

*Absent 1 out of 6 with leave of Board of Management

RESERVES POLICY

SPD maintains a pragmatic reserves policy which is to ensure that the immediate needs of clients are met with sustainable resources to support our clients through the programmes and services.

As at 31 March 2019, SPD's reserves stood at about 8.5 months.

The Board regularly reviews the financial performance and forecasts against budgets to ensure that reserves are adequate to fulfil our continuing obligations.

CONFLICT OF INTEREST POLICY

SPD's conflict of interest policy, which is approved by its Board, requires Board and Board Committee members and employees to declare actual or potential conflicts of interest on a regular, need to and earliest opportunity basis.

Conflicts of interest are also managed through excluding staff and Board members from discussions and decision-making where there is a conflict of interest.

Documented policies and procedures serve to guide and help define what constitutes a conflict of interest and how a conflict situation is to be handled.

CODE OF GOVERNANCE EVALUATION CHECKLIST FOR THE YEAR ENDED 31 MARCH 2019

S/NO.	Code Guidelines	Code ID	Response (select whichever is applicable)	Explanation (if Code guideline is not complied with)
BOARD GOVERNANCE				
1	Induction and orientation are provided to incoming governing Board members upon joining the Board.	1.1.2	Complied	
2	Are there governing Board members holding staff appointments? Remarks: (skip questions 3 and 4 if "No")		No	
3	Staff does not chair the Board and does not comprise more than one third of the Board.	1.1.3		
4	There are written job descriptions for the staff's executive functions and operational duties, which are distinct from the staff's Board role.	1.1.5		
5	The Treasurer of the charity (or any person holding an equivalent position in the charity e.g. Finance Committee Chairman or a governing Board member responsible for overseeing the finances of the charity) can only serve a maximum of four consecutive years. If the charity has not appointed any governing Board member to oversee its finances, it will be presumed that the Chairman oversees the finances of the charity.	1.1.7	Complied	
6	All governing Board members must submit themselves for re-nomination and re-appointment at least once every three years.	1.1.8	Complied	
7	The Board conducts self-evaluation to assess its performance and effectiveness once during its term or every three years, whichever is shorter.	1.1.12	Complied	
8	Is there any governing Board member who has served for more than 10 consecutive years? Remarks: (skip item 9 if "No")		Yes	
9	The charity discloses in its annual report the reasons for retaining the governing Board member who has served for more than 10 consecutive years	1.1.13	Complied	Ms Chia Yong Yong is the only Board member who continues to serve beyond 10 consecutive years as SPD benefits from her unique experience and leadership which includes her participation and contribution at the sector, community and national levels.
10	There are documented terms of reference for the Board and each of its committees.	1.2.1	Complied	

CONFLICT OF INTEREST				
11	There are documented procedures for governing Board members and staff to declare actual or potential conflicts of interest to the Board at the earliest opportunity.	2.1	Complied	
12	Governing Board members do not vote or participate in decision making on matters where they have a conflict of interest.	2.4	Complied	
STRATEGIC PLANNING				
13	The Board periodically reviews and approves the strategic plan for the charity to ensure that the charity's activities are in line with the charity's objectives.	3.2.2	Complied	
14	There is a documented plan to develop the capacity and capability of the charity and the Board monitors the progress of the plan.	3.2.4	Complied	
HUMAN RESOURCE AND VOLUNTEER MANAGEMENT				
15	The Board approves documented human resource policies for staff.	5.1	Complied	
16	There is a documented Code of Conduct for governing Board members, staff and volunteers (where applicable) which is approved by the Board.	5.3	Complied	
17	There are processes for regular supervision, appraisal and professional development of staff.	5.5	Complied	
18	Are there volunteers serving in the charity? Remarks: (skip item 19 if "No")		Yes	
19	There are volunteer management policies in place for volunteers.	5.7	Complied	
FINANCIAL MANAGEMENT AND INTERNAL CONTROLS				
20	There is a documented policy to seek the Board's approval for any loans, donations, grants or financial assistance provided by the charity which are not part of the charity's core charitable programmes.	6.1.1	Complied	
21	The Board ensures internal controls for financial matters in key areas are in place with documented procedures.	6.1.2	Complied	
22	The Board ensures that reviews on the charity's internal controls, processes, key programmes and events are regularly conducted.	6.1.3	Complied	

23	The Board ensures that there is a process to identify, and regularly monitor and review the charity's key risks.	6.1.4	Complied	
24	The Board approves an annual budget for the charity's plans and regularly monitors the charity's expenditure.	6.2.1	Complied	
25	Does the charity invest its reserves (e.g. in fixed deposits)? Remarks: (skip item 26 if "No")		Yes	
26	The charity has a documented investment policy approved by the Board.	6.4.3	Complied	
FUNDRAISING PRACTICES				
27	Did the charity receive cash donations (solicited or unsolicited) during the financial year? Remarks: (skip item 28 if "No")		Yes	
28	All collections received (solicited or unsolicited) are properly accounted for and promptly deposited by the charity.	7.2.2	Complied	
29	Did the charity receive donations in kind during the financial year? Remarks: (skip item 30 if "No")		Yes	
30	All donations in kind received are properly recorded and accounted for by the charity.	7.2.3	Complied	
DISCLOSURE AND TRANSPARENCY				
31	The charity discloses in its annual report – (a) the number of Board meetings in the financial year; and (b) the attendance of every governing Board member at those meetings.	8.2	Complied	
32	Are governing Board members remunerated for their services to the Board? Remarks: (skip questions 33 and 34 if "No")		No	
33	No governing Board member is involved in setting his or her own remuneration.	2.2		
34	The charity discloses the exact remuneration and benefits received by each governing Board member in its annual report, or the charity discloses that no governing Board member is remunerated.	8.3		
35	Does the charity employ paid staff? Remarks: (skip questions 36, 37 and 38 if "No")		Yes	

36	No staff is involved in setting his own remuneration.	2.2	Complied	
37	The charity discloses in its annual report the annual remuneration – (a) the total annual remuneration for each of its three highest paid staff who each has received remuneration (including remuneration received from the charity's subsidiaries) exceeding \$100,000 during the financial year; and (b) whether any of the three highest paid staff also serves as a governing Board member of the charity. The information relating to the remuneration of the staff must be presented in bands of \$100,000, or the charity discloses that none of its paid staff receives more than \$100,000 each in annual remuneration.	8.4	Complied	
38	The charity discloses the number of paid staff who satisfy all of the following criteria: (a) the staff is a close member of the family belonging to the Executive Head or a governing Board member of the charity; (b) the staff has received remuneration exceeding \$50,000 during the financial year. The information relating to the remuneration of the staff must be presented in bands of \$100,000, or the charity discloses that there is no paid staff, being a close member of the family belonging to the Executive Head or a governing Board member of the charity who has received remuneration exceeding \$50,000 during the financial year.	8.5	Complied	
PUBLIC IMAGE				
39	The charity has a documented communication policy on the release of information about the charity and its activities across all media platforms.	9.2	Complied	

Thank You!

DONOR ACKNOWLEDGEMENT APRIL 2018 TO MARCH 2019

\$250,000 and above	\$10,000 - \$49,999	
Asia Pacific Breweries Foundation United Overseas Bank Limited	Aberdeen Asset Management Charitable Foundation Accenture Pte Ltd Agri-Supplies Pte Ltd	Jung Young Soo Jurong Port Pte Ltd Kuan Im Tng Temple (Joo Chiat) Lam Yew Chong
\$100,000 - \$249,999		
Estate of Lim Shan Shan TechnipFMC Kowloon Club Loyang Tua Pek Kong NTUC Fairprice Foundation Ltd President's Challenge San Wang Wu Ti Religious Society Singapore Totalisator Board StarHub Ltd	Ah Chiang Porridge Pte Ltd Anglo-Chinese School (Independent) Apple Inc. Berzins Andrey Chan Man Ping Philip Chang Meng Kiat CMA Mental Arithmetic Centre Pte Ltd Coty Asia Pte Ltd DBS Bank Ltd Energeo Systems Pte Ltd Ernst & Young Solutions LLP Exyte Singapore Pte Ltd Federal Express (S) Pte Ltd Flextronics Foundation Hai Leck Holdings Ltd Hoe Kee Hardware Pte Ltd Isaac Manasseh Meyer Trust Fund	LEGO Singapore Pte Ltd Marina Bay Sands Pte Ltd Methodist Girls' School Microsoft Singapore Ng Kim Suan Foundation Ntegrator Pte Ltd Oan Chim Seng Ong Kim Pong Overseas Academic Link Pte Ltd Pavilion Capital International Pte. Ltd. Phillips 66 International Trading Pte Ltd
\$50,000 - \$99,999		
Chew How Teck Foundation Gan Beng Chwee Benjamin Keppel Club Kwan Im Thong Hood Cho Temple NatSteel Holdings Pte Ltd Singapore Bowling Federation		Quah Kee Swee Raffles Country Club RHB Bank Berhad Samsung Asia Pte Ltd Seet Lucy Select Group Limited Shu Xiaochuan

Singapore Pools
(Private) Limited
SJJ Marine Pte Ltd
Tan Han Swee
The Korean Chamber
of Commerce
Yeo Lay Choo
Yin Fook Cheong
Young Men's Christian
Association of Singapore

\$3,000 - \$9,999

AAstar Pte Ltd
Aegis Building &
Engineering Pte Ltd
ASA Contracts Pte Ltd
Baurand Pte Ltd
Chan Lian Chai
Chen Yimei
Cheong Wai Kun
Cheong Yok Keat
Concorde Security Pte Ltd
Dabo Corporation Pte Ltd
DNC (Education) Pte Ltd
Elite Natural Healthcare
Pte Ltd
F.M.Noordin & Company
Pte Ltd
Foo Ai Luan
Frasers Property
Corporate Services Pte Ltd
Galmon (S) PTE LTD
Gui Boon Pien
He Zhi Hao
HFC Prestige International
Operations Switzerland Sarl
Singapore Branch
Hitachi Vantara Pte Limited
Ho Wee Khong
Hong Leong Foundation

Hoy San Stevedoring Pte Ltd
HSBC Institutional Trust
Services (Singapore) Limited
Hua Siah Construction Pte Ltd
Jiangsu Association
JP Nelson Equipment Pte Ltd
JSW Advisory Pte Ltd
Kalthsum Mohd Yassin
Khoo Mavis
Kimoto Pte Ltd
Koh Ee Chor
KPMG LLP
Land Transport Authority
Lee & Lee
Lee Chin Cheng
Lee H. Y. Alfred
Lee Hong Hwee Mike
Lee Jun Hao Melvin
Lee Kim Tah Foundation
Lee Weng Chong
Lenovo Enterprise Solutions
(Singapore) Pte Ltd
Leow Yuen Fen
Lien Foundation
Lim Ming-Hui Andrew
Lim Nancy
Lingjack Engineering
Works Pte Ltd
Liu Jiehong
Low Hwee Chua
Low Kim Sun
Manohar Advait
Maxi-Cash Group Pte Ltd
Mitsubishi Electric Asia Pte Ltd
Mutual Benefits Realty Pte Ltd
National Research Foundation
NEC Asia Pacific Pte Ltd
Network For Electronic
Transfer (Singapore) Pte Ltd
New Mun Kit

Nira Tanoko - Solid Rock
Foundation c/o Community
Foundation of Singapore
Noble Life International
Singapore Pte Ltd
Paul Jacob
Peter Lee Orthopaedic Pte Ltd
Phoon Siew Koon Francis
Png Tiong Hai
Poa K B Cynthia
Puat Jit Buddhist Temple
Quek Koh Kheng
Sembcorp Industries Ltd
SH Design & Build Pte Ltd
Siang Cho Keong Temple
Simple Technologies
Private Limited
Singapore Amoy Association
Singapore Global Ginseng
Exchange Pte Ltd
Singapore United Estates
(Pte) Ltd
SingEx Exhibitions Pte Ltd
Soo Wai Kong
Soon Hao Han John
St. Joseph's Institution
Sumet Jiaravanon
Tak Products & Services Pte Ltd
Tan Yuh Woei
Tay Jin Ying
Teochew Poit IP Huay Kuan
The Centre for Inner Studies
in Singapore Ltd
The Community Foundation
of Singapore
The Purple Parade Ltd
The Shaw Foundation Pte
Thomson Shin Min Foundation
Tran Bao Yen
Trans-Orient Shipping Pte Ltd

TTJ Design And Engineering
Pte Ltd
Tuas Pek Kong Keng
Management Council
Value Add System &
Technology Pte Ltd
Veritas Storage (Singapore)
Pte Ltd
Wang Renqian
Wen Way Investments Pte Ltd
Wendell Trading Company
White Lodge Kindergarten
Phoenix Park Pte Ltd
William & Mary Bird Fund
Wipro Networks Pte Ltd
Wong Chee Khin David
Wong Soon Peng Adrian
Woon Brothers Foundation
Pte Ltd
Yangzheng Foundation
Yeo Ah Yeng
Zhang Rong
Zhao Bingli
Zhao Jiye

\$1,000 - \$2,999

Active Learners Child Care
Pte Ltd
Ang Hwee Yang
Annitha Annathurai
Asia Pacific Breweries
Singapore Pte Ltd
Auw Chor Cheng
Baosteel Singapore Pte Ltd
Bombay Bazaar
Bryan Marshall
Capital Airconditioning
International Pte Ltd
Capitaland Hope Foundation
Chai Min Chuan

Chang Pow Onn Alexius
Chang Wee Hua Eric
Chang Yueh Fong Cecilia
Cheah Seng Cher
Chee Nian Tze
Chee Wei Shuen Shaun
Chew Beng Eng Evelyn
Chia Cher Kiang Vincent
Chia Kim Chai
Chia Kim Huat
Chia Kim Yong
Chiang Cheok Kin
Chiang Ging Seng
Chiang Hock Seng Patrick
Chien Hsiu Fang
Chinniah Kunnasagaran
Chionh Chye Khye
Chok Soo Hoon Mildred
Chong Khee Yin
Choo Kok Guan
Chow Kum Seng
Chow Pei Pei Cindy
Chow Woon Chun
Chua Chai Hun
Chua Hai Siew Ambrose
Chua Shengzhi
Chua Soh Har
Chua Wee Lee Anggere
Design 2 Associates Pte Ltd
Dhavalé Ajinkya Arvind
DHL Supply Chain Singapore
Pte Ltd
Dou Yee Enterprise (S) Pte Ltd
Dunman High School
Durasafe Pte Ltd
ECO2 Builder Pte Ltd
Edrington Singapore Pte Ltd
Eng Boon Heng Leslie
Fairfield Methodist School
(Primary)

First Corp Pte Ltd
Fong Chee Meng
Gan Beng Jin Lloyd
Gan Chin Wei Tervis
Gan Ying Tang
Gay Ping Kee Raymond
Goh Boon Leng
Goh Chwee Sing
Goh Dong Hong
Goh Eng Heng
Goh Kwang Soon Joel
Goh Pi Lee Beverly
Goh Sze Wei
Greatland Company Pte Ltd
Grid Communications Pte Ltd
Gwee Tiong Kee Ronald
Hakim Warsono
Han Chung Heng
Harry Elias
Hewlett-Packard Singapore
(Sales) Pte Ltd
Ho Pang Min
Ho Twee Teng
Ho Zhi Zhang
Hong Geok Mui
HP Singapore (Private) Limited
Huang Ching Ying
Hyundai Merchant Marine
(Singapore) PTE. LTD.
Interlocal Exim Pte Ltd
James Cook University
Singapore (Psychology
Society)
Joe Li Electrical Industries
Pte Ltd
John Edward Champion
Kamalarajan Senbagavalli
Kang Choon Seng
Kee Sek Huat
Keh Soh Hua

Keith De Vaz	Lim Vih Chun	Paw Lena
Khiew Kim Choy	Lim Yock Kee	Petrojaya Marine Sdn Bhd
Koh Yee Sung	Lim Yong Hiang	Phoon Yat Tatt
Kong Yee Mun	Lin Chung Chiao Annie	Poh Choon Wei
Kwok Lilian	Ling Cher Guan Daniel	Poh Hwee Hian
Lai Chee Weng	Linn Yeh Ching	PPIS Child Development Centre
Lam Kim Meng Nico	Liu Meng Lye	Prem Kumar
Lau Hau Sian	Loh Jun Kitt	Quantum Automation Pte Ltd
Lau Kok Seng	Low Peck San	Quek Chin Huat
Law Tian Beng James	Low Phui Hiong	Quek Sio Chua Robert
LEAP Foundation Ltd	Low Wong Fook	Rakesh Dhir
Lee Christine	Lui Wing Loon	Royal Caribbean Cruises (Asia) Pte Ltd
Lee Eng Choon	Luke Anne	Saleha Johari
Lee Guan Guan	Lum Chui Kam	SBS Transit Ltd
Lee Hong Seng Robert	Majlis Ugama Islam Singapore	Seah Chee Wee
Lee Hui San	Mangala Vihara (Buddhist Temple)	Seah Siew Seng
Lee Kai Sin	Meta Fusion Pte Ltd	See Tho Kai Yin
Lee Lai Cheng Alicia	Moez H Nakhoda	Seu Teck Sean Tong Yiang Sin Sia
Lee Seng Quee	Mok Kim Chye	Sheo Shanker Rai
Lee Siong Tek	My First Skool @ Fajar	Sim Keat Sim
Lee Tong	Netsis Technology (S) Pte Ltd	Sim Siah Kwang
Lee Ying Boey	Ng Chee Eng	SingEx Venues Pte Ltd
Leng Ern Jee Temple	Ng Cho Jan	Sivakumar Saravan
Leong Siew Weng Engineering Pte Ltd	Ng Eng Khin	Soh Kim Chye Dave
Leong Teck Hong	Ng Guan Choo	Soon Soon Tuan Tiong Tuan Tai Guan Sw
Leverage Leap Pte Ltd	Ng Kam Hong	Specialty Solutions Provider Pte Ltd
Li Qianwen	Ng Ting Ann	Susan Mary De Silva
Li Suet Man	Ng Wee Li	Tai Chee Hong Jan
Liau Suzanne	Ngan Wan Sing Winston	Tampines Chinese Temple
Liew Siew Yoon	Ngee Ann Secondary School	Tan Aik Hoe Ivan
Lim Ewe Teck Andy	Ong Lay Choo	Tan Chee Yoon
Lim Gim Eng Warren	Ong Seng Hong Joseph	Tan Chim Hoon
Lim Kim Huat	Ooi Bok Koon	Tan Eddie
Lim Kong Eng	Oon & Bazul LLP	Tan Gim Choo
Lim Leong Chuan	Outsource Asia Industries (2008) Pte Ltd	Tan Hai Peng
Lim Seow Hwa	Pacodis Pte Ltd	Tan Hong Beng
Lim Siew Hwa		
Lim Soo Kin		
Lim Teck Chai Danny		

Tan Khuan Seng
Tan Kim Biau
Tan Kum Weng Terry
Tan Lai Bee
Tan Lay Eng Eileen
Tan Ming Hong David
Tan Poh Gek Christina
Tan Shern Liang
Tan Siong Chiow
Tan Soon Meng
Tan Thian Pong Lennon
Tan Tuan Heng David
Tan Twee Mei Rona
Tan Wei Chin
Tang Liheng
Tara Apothecary
Tay Hui Hian Kenny
Tay Sai Hiang
Tay Sen Yong
Tay Soo Hoon Elaine
Tay Woon Teck
Tee Hiok Yim
Teo Hong Lim
Teo Kee Meng
Teo Kim Eng
Teo Seow Phong
Teo Su Pei Belinda
Teo Wee Leng
Teoh Lay Ghee
Tham Kui Seng
Thampuran Rajendran
Thio Tse Gan
Thong Teck Sian Tong Lian
Sin Sia
Tien Siew Ling
Ting Yau Juan
Tobias Alexander Stutz
Toh Annie
Toh Hong Huat
Tong Geok Yen

Tseng Charles
Tushar Kapde
Tuty Limas
Veerasingam Prem Kumar
VIP Hotel Singapore
Wang Li
Wong Chi Kong Thomas
Wong Pak Kee
Wong Tingsern
Woo Shian Loong Alan
Woon Wee Hao
Yan Kit Village Chinese Temple
Yeo Basil
Yeo Hwee Joo
Yeo Yong Qiang
Yoga Movement
Yoga-Willetts Nalini

SUPPORTERS AND VOLUNTEERS/ORGANISERS OF EVENTS, DONATIONS-IN-KIND, SERVICES OFFERED TO SPD APRIL 2018 TO MARCH 2019

Acierto Leah Regina	Bedok Green Secondary School	Chiang Wei Min Sylvia
Advaitaa Kathavarayan	Bedok View Secondary School	Chiew Poh Chue Agnes
African Market Place	Boersma Tineke	CHIJ Toa Payoh
Ahmed Khan Shifat	Boo Xu Ning	CHIJ Toa Payoh (Secondary)
Anakkara Narayanan Sreekumar	Bukit Panjang Government High School	Chin Yong Sak
Anderson Junior College	Burin Beatriz Aparecida	Chng Chin Soon
Ang Ai Fung Kelly	CapitaLand Limited	Chong Soon Cheong
Ang Choon Hua Richard	Catholic High School	Chong Xue Min Joanne
Ang Fiona	Cedar Girls' Secondary School	Choo Chee Hong Joseph
Ang Phuay Eng	Certis Group	Choo Oi Foong May
Ang Xin Ying	CH Offshore Ltd	Chu Vien Hang
Ang Yan Min	Chai Eliza	Chua Beng Wan
Ang Yiling Charlyn	Chan Choy Foong @ Patti Ho	Chua Frances
Ang Yu Sieu	Chan Jen	Chua June
Anglican High School	Chan Sai Tim	Chua Raymond
Anglo-Chinese Junior College	Chan Seow Yin	Chua Wee Lee
Anglo-Chinese School (Independent)	Chan Shu Yin	Clarke Quay
Annabelle Atkins	Chan Wei Chen Mario	Clarke Quay Central
Arrow Electronics (S) Pte Ltd	Chang Chee Yuen Jonathan	Clementi Town Secondary School
ASA Contracts Pte Ltd	Chee Celine	Common Man Coffee Roasters
Ashika Sarah	Chem Yew Tee	Corradi Julia
Asian Civilisations Museum	Chen Jee Keong	Coty Asia Pte Ltd
Association of Small & Medium Enterprises	Chen Ming	Creamier
Atos Wellness Pte Ltd	Cheong Hui Ai Rachel	Crystal Time (S) Pte Ltd
Audi Singapore Pte Ltd	Cheong Yin Fun Theresa	Cummins Asia Pacific Pte Ltd
AVA Insurance Brokers Pte Ltd	Cheong Yoke Keng	Danial Kaarthik Pillay
Baby Moo Creamery	Chew Chai Hung	Dash Preeti
Balasubramanian Anusha	Chew Wan Ping	De Silva Ida
Basu Bedashruti Mitra	Chia Wing Soon James	De Souza Aranha Luciana Mainardi
Bay Wee Li	Chiah Chai San	Debora Castor Dos Santos
	Chiang Wai Ying Peggy	DHI Group Inc

Diego Luis Rojas
Dow Chemical Pacific
(Singapore) Pte Ltd
Dystar
EI Holdings Pte Ltd
Eistudy Singapore Pte Ltd
Eureka! Campaign Associates
Pte Ltd
Fairfield Methodist School
(Primary)
Far East Organization
Federal Express (S) Pte Ltd
Flextronics Manufacturing
(Singapore) Pte Ltd
Fong Chan Whye Roy
Food Bank Singapore Ltd
Foodie Market Place Pte Ltd
Forty Hands
Foung Christine
Fraser's Property Singapore
Gan Siew Wei Genny
Gan Thiam Meng Ivan
Gay Sen Min Gareth
Georgia Gugliotta
German Market Place
Global Indian International
School
Goh Chong Hoe
Goh Eng Chai Jason
Goh Joo Hin Pte Ltd
Goh Kang Hsien Evangeline
Goh Lan Buay
Goh Maureen
Grand Copthorne Waterfront
Hotel
Hai Sing Catholic School
Hai Sing Secondary School
Hair Fitness
Han Enqi
Harris John

Healthsciences International
Pte Ltd
Heartwave Network
Hee Jia Yun
Heng Jia Jia
Heng Mui Heng Julia
Heng Zee Kek
Hewlett Packard Enterprise
Hisamitsu Pharmaceutical Co.
Inc (Singapore Branch)
Ho Geok Bin
Ho Lye Meng
Ho Suh Sze
Ho Wai Han
Ho Yi Zhen Stephanie
Ho Yoke Cheng
Hock Lam Beef
Home-Fix D.I.Y. Pte Ltd
Hotel Jen Tanglin Singapore
HP Inc.
Hsing Hsiao Wen
Hwa Chong Institution
IBM Singapore Pte Ltd
Ice Cream Brandz Pte Ltd
iDfast
Imagine+ Pte Ltd
Island Creamery
Ismail Nur Jana
iVilla
Jada Art Gallery
Jayaprakash JB
JR Group
Just Dough Pte. Ltd.
Kam Soo Ying
Kanika Sharma
Kau Sho Kee Margaret
Kee Bing Han
Kee Guek Keow Celine
Keppel Land Limited
Kho Chor Keng Pauline

Khoo Janice
Kim Ai Ching Sharon
Kleen-Pak Products Pte Ltd
Koh Bee Chin
Koh Eileen
Koh Mui Keng Diana
Koh Wee Tat Nigel
Koo Kah Yee Rachel
Korean Chamber of
Commerce (Singapore)
Krishnan Monharan
Kuo Pei Rou Suzanne
Kwang Hui Yi Cari
Kwek Bronson
Kwong Jia Min Tammy
Lam Kit Ying
Lam Nguk Hiong
Land Transport Authority
Lau Boon Cheng Jasmine
Lau Wendy
Lee An Sheng
Lee Chee How
Lee Choon Liang
Lee Choy Foon Phyllis
Lee Hui Sian Clare
Lee Kum Hung Margaret
Lee Lay Keow
Lee Lian Tee Josephine
Lee Mary Ann
Lee Ming
Lee On Na Anna
Lee Sheen
Lee Shulian
Lee Sok Yi
Lembayung Tirzah
Leong Mei Keat
Leung Jia Jun
Liau Chee Kiong Edmund
Liew Huay Ling
Liew Sok Ying

Lim Annie	Micron Technology Inc.	Nixon Nicola
Lim Bee Nah	Microsoft Singapore	Noor Jannah Binte Ahmad
Lim Ee Lee	Millennia Institute	Hakim
Lim Fiona	Millenniums Consultants	Noraini Binti Abd Ghani
Lim Kim Seng Jessie	Pte Ltd	NTUC Fairprice Co-operative Ltd
Lim Lion Ping Christine	Ministry of Social and Family	NTUC Fairprice Foundation Ltd
Lim May Yee	Development	Nur Batrisyia bte Azman
Lim Pei Yan	Mistubishi Electric Asia Pte Ltd	Oh Chwee Lian Alise
Lim Qian Hui	Mohd Shafi Mohd Dzar	Old Chang Kee Ltd.
Lim Sharon	Shahrullah	Ong Gek Kuan Sandy
Lim Sim Hoong	Mridulla Ravi Annuradhaa	Ong Hwee Peng
Lim Sim Hwee	MUFG Securities Asia	Ong Kim Eng
Lim Sophia	(Singapore) Limited	Ong Mei Nee Eileen
Lim Woon Lee Jenny	Mutts & Mittens Pte Ltd	Ong Teck Hui
Lim Zhen Sophia	My Kiddos Pte Ltd	Ong Xin Xiang Alex
Lim Zhi Guang Ivan	Nai Jogina	Orchid Country Club
Ling Ee Choo Pearly	Nan Hua High School	Orchid Park Secondary School
Liu Peiling	Nan Hua Primary School	Osim International Ltd
Liu Yeok Lan Jane	Nanyang Junior College	Ow Yi Xian
Lobato Barbara Correa	Nanyang Old Coffee @	Ow Yong Siew Ying
Loh Yin Hoi	Biopolis	P&G Singapore
Loke Mun Hao	Nanyang Polytechnic	PCF Sparkletots Preschool @
Long Wai Heng Joyce	Nanyang Technological	Toa Payoh East-Novena
Low Alfred	University	Pearson Education South Asia
Low Geak Muay Betty	Narvankar Dimple	Pte Ltd
Low Kiah Hwee	National Junior College	Phoon Siew Chuan
Low Su Juan	National Kidney Foundation	Phoon Siew Koon Francis
LS Aesthetic Clinic Pte Ltd	NatSteel Holdings Pte Ltd	Phoon Ying Xin
Lubrizol Southeast Asia	Neo Beng Choo	Phua Chee Yuan
(Pte) Ltd	NeoAsia (S) Pte Ltd	Po Wan Li Wendy
Lye Boon Siew Susan	Ng Boon Lin Yolanda Beatrice	Po Wan Ling Eileen
Lye Xiu Ting Rachel	Ng Chuey Hoon Nancy	Poh Gwat Eng
Ma Edelweiss	Ng Michael Benjamin	Poh Teck Leng
Mah Lam Sum	Ng Pai Soo Michael Benjamin	Pokka International Pte Ltd
Mahtani Aparna Naidu	Ng Seok Choo Molly	Poon Sau Kwuan
Malufe Giovana	Ng Siew Lee Shirley	Price Diane Janina
Mandom Corporation	Ng Xue Ling Alicia	Procter & Gamble Singapore
Marina Bay Sands Pte Ltd	Ngee Ann Polytechnic	Public Service Division
Meridian Junior College	Nguyen Thi Mai Huong	Quek Eng Ping @Aishah Quek
Methodist Girls' School	Helena	Quek Jin Boon William

Quek Wee Yeow
Quek Xuan Zhi Wymund
Raffles City Shopping Centre
Raffles Country Club
Raffles Girls' School
Raffles Institution
Raffles Medical Group
Raquel Galvani Shirota
Reid Gillian
Resorts World Sentosa
Robert Ronak Adonai
Royal Caribbean Cruises
(Asia) Pte Ltd
SAFRA
Sage Software Asia Pte Ltd
Saik Meng Tho Simon
Sandoval Patricia
Seck Alvin
See Swee Ling
See Toh Lai Chan
Seet Keng Thye Norman
Seet Shihui Sheryl
Seletar Country Club
SG Cares
Shakeela Parveen Binti
Ghulam Mohamed
Sharan Ishika
Sharan Jaya
Sheng Siong Supermarket
Pte Ltd
Shin Hong Engineering
Pte Ltd
Shun Zhou Group
Sia Bee Keow Jane
Siemens Pte Ltd
Sim Huat Shirley
Sim Jian Wei
Sim Kok Leng Steve
Sime Darby Property
Singapore Limited

Sing Rachael
Singapore Art Museum
Singapore Association of
Social Workers
Singapore Island Country
Club
Singapore Soka Association
Siti Norhizah bte Abdul
Hamid
SMRT Corporation Ltd
SmsDome Pte Ltd
Sng Hwee Tiang Surin
Sng Yen Sen Dawn
Society Staples
Soh Ah Tee Susan
Soh Ming Wah
Song Wei Chu Susan
Soon Seok Hian Louisa
Spafax Airline Network
(Singapore) Pte Ltd
ST Engineering
St Joseph's Institution
Stamford American
International School
Sunshine Bakeries
Suntory Beverage & Food
Sushi-Tei Pte Ltd
Swiss Cottage Secondary
School
Tam Ching Yi
Tan Ai Leng Linna
Tan Bee Chu
Tan Beow Kheng
Tan Chee Kin Alex
Tan Hwee Chen Evette
Tan Hwee Kheng Violet
Tan Kian Meng
Tan Lay Choo
Tan Lee Lin
Tan Li Xin Bernice

Tan Puay Hoe
Tan Siew Lan Eve
Tan Siok Lay Gladys
Tan Siok Yuan Fiona
Tan Soo Peng Jaslin
Tanah Merah Country Club
Tang Foong Har
Tanjong Pagar - Tiong Bahru
Constituency Office
Tan-Loh Soek Yein
Tann Soon Aun Kevin
Tay Ah Kiat Godfrey
Tay Poh San June
TechnipFMC
Temasek Junior College
Teo Agnes
Teo Shi Jun Tess
Teo Terry
Teo Yoke Yin
Tey Ling Ling
Tham Bernard
That Marketing Guy Pte Ltd
The Muffinry
The Providore Singapore
Pte Ltd
Three Legs Brand
Tin May Thinzar
Ting Tau Nay Nicky
Tio Marcus
Tjoa Shu Huan Beatrice
Tng Chwee Huay
Tng Sze Sze Chloe
Tor Jia Fu
Tuan Yuan Pork Ribs Soup
Pte Ltd
Tung Sow Leng
Ucares
Uma Chellam
Vahid Hadimanesh
Victoria School

Vidanes Allen Penus
Visa Worldwide Pte Ltd
Wan Chieh Ch'ang Elizabeth
Wang Kian Kim
Wang Shufang
Warren Country Club
Watt Wai Mei
Wee Eng Choo Maggie
Wen Ken Group
Wimbly Lu Chocolates
Wipro Limited
Woh Hup (Private) Limited
Wong Chee Kian Daniel
Wong Deming Wallace
Wong Kwai Fong
Wong Ming Chen Anthony
Wong Pui Yoke
Xi De Li
Xinmin Secondary School
Xpressflower.com Pte Ltd
Yap Beng Teck Ben
Yeo Chew Tung Richard
Yeo Chong Peng
Yeo Gek Chin Winnie
Yeo Zi Xin
Yew Swee Mui Judy
Yiong Mei Song Sharon
Zaiton Ahmad Harrington
Zhang Shufen
Zhonghua Secondary School

We regret that we are unable to acknowledge all the help and support we have received in the year in these pages.

We sincerely thank all our donors, volunteers, supporters, friends and well-wishers who have stood by our cause and made an impact in the lives of persons with disabilities.

How You Can Help

ADVOCATE



Help raise disability awareness and integrate persons with disabilities into the community.

OFFER EMPLOYMENT



Providing job opportunities to jobseekers with disabilities will greatly benefit the individuals and allow them to be financially independent.

BUY OUR PRODUCTS



Our Sheltered Workshop offers a wide range of products and services made by a team of more than 100 persons with disabilities. Your support will translate to more training and employment opportunities for them.

FUNDRAISE



If you have an opportunity to raise funds for us, or have ideas how we can do it, please share them with us!

DONATE



Every donation goes a long way towards helping people with disabilities achieve independence and self-reliance.

VOLUNTEER



An extra pair of hands is always welcome to provide additional help in our many programmes and services.





Serving people with
disabilities since 1964



Headquarters

2 Peng Nguan Street
SPD Ability Centre
Singapore 168955

SPD@Tampines

Blk 866
Tampines St 83
#01-237
Singapore 520866

SPD@Bedok

Blk 522
Bedok North Ave 1
#01-312
Singapore 460522

SPD@Toa Payoh

Blk 249
Kim Keat Link
#01-83
Singapore 310249

SPD@Jurong

Blk 337
Jurong East Ave 1
#01-1562
Singapore 600337

Tech Able

20 Lengkok Bahru
Enabling Village
Singapore 159053

Connect with us



/SPDsingapore



www.spd.org.sg



information@spd.org.sg



6579 0700

Unique Entity No:
(ROS Registration No.)

S64SS0052D

IPC No: IPC000441